

COSPLAY GUIDE

HAROONA

UNKNOWN9
AWAKENING



HAROONA

Haroona is a fiercely loyal and daring young woman whose tumultuous past has shaped her into the courageous Quaestor she is today. Her innate connection to an alternate dimension known as the Fold has gifted her powerful abilities that allow her to manipulate the unseen. A beloved mentor helps her hone her gifts, teaching her the ways of the Fold before she is propelled on an epic journey across the world.

UNKNOWN 9
AWAKENING

Reflector BANDAINAMCO

HAROONA

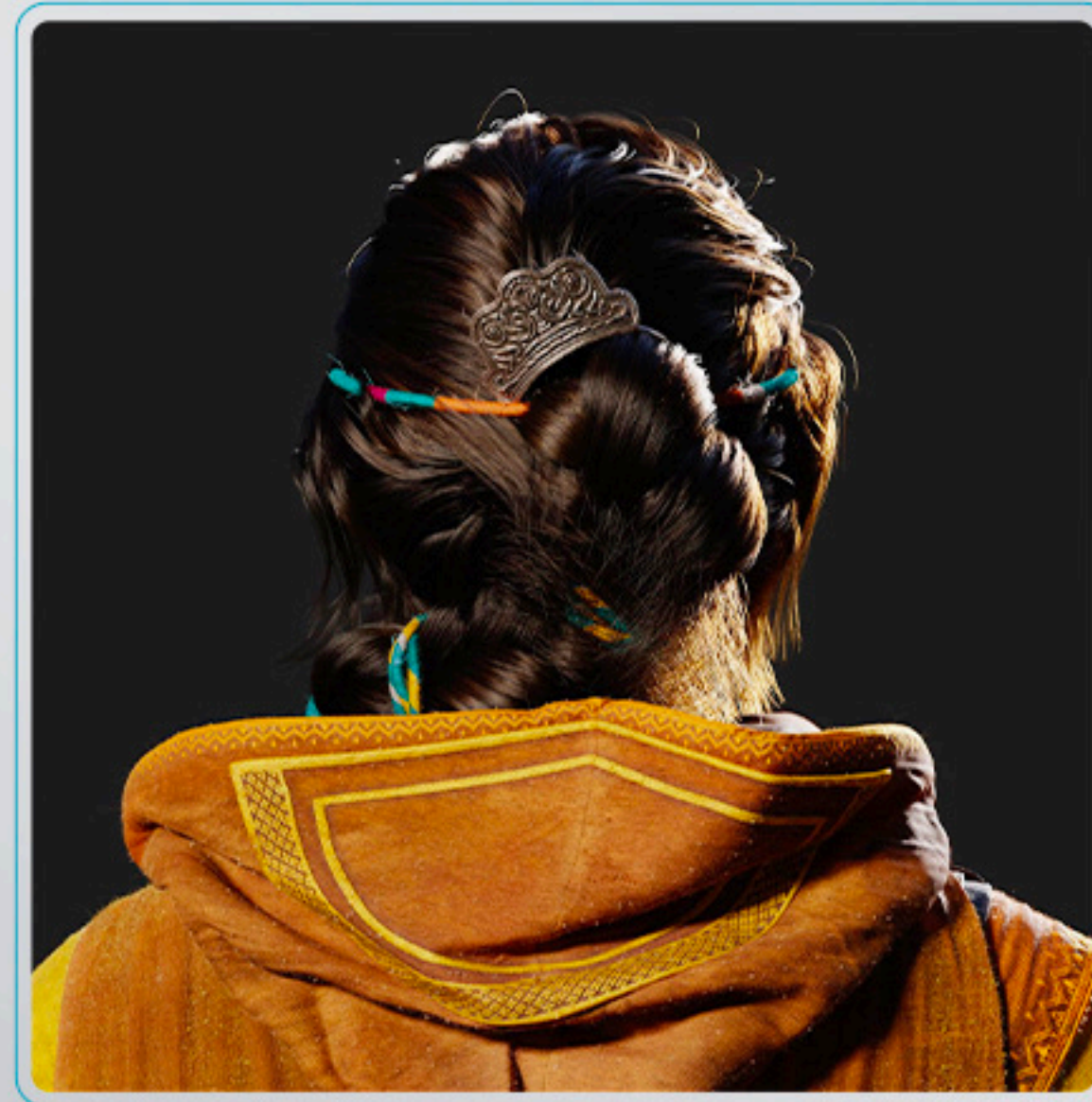
— FULL-BODY VIEW



— UNKNOWN9 —
AWAKENING.

HAROONA

— FACE AND HAIR



HAROONA

TOP

OVER TUNIC

● Linen
● Gold embroidery

● #DBC063

● #DACDB3

AMULET

● Unidentified Material

● #6D7581

SASH

● Linen - Gold embroidery

● #9F662F

● #CDA657

BELT

● Leather

● #6B4C40

SHOULDER BELT

● Leather

● #6B4C40

BELT

● Metal

● #595654

HAROONA

TOP

UNDER TUNIC

- Linen
- #60603A

CAPE AND HOOD

- Crepe - Gold embroidery
- #9F662F
- #CDA657

ARM STRAP

- Leather
- #54412C

SCROLL CASE

BELT POUCH

- Leather
- #54412C

HAROONA

PANTS AND BOOTS

LEG WRAP

- Leather
- #615648

BOOTS

- Leather
- #593A20

PANTS

- Stretch suede
- #615648

HAROONA

ACCESSORIES: GLOVE AND SHADE BRACERS

SHADE BRACERS

- Unidentified Material
- #3A3737

FINGERLESS GLOVE

- Leather
- #9A8070
- #584A40

SCROLL CASE

RADIO

HAROONA

ACCESSORIES: RADIO



Advanced LYS communication technology

UNKNOWN9
AWAKENING

HAROONA



ACCESSORIES: REIKA'S AMULET



This quietly spectacular little pendant is as mysterious as the woman whose name is attached to it. Its traits are unmistakable: a hooded figure, both foreboding and reassuring, hovering over a conspicuous keyhole motif whose significance has been lost to time; a style evocative of long forgotten ruins; an unidentified material that appears to have been cast as a whole and is somehow both impervious to wear yet deeply marked by eons of time. When she bestowed it upon her, Reika would only tell Haroona that the amulet was a symbol of family, or of a cause that is larger than oneself.

UNKNOWN9
AWAKENING



Reflector

BANDAI NAMCO



One of the most intriguing and powerful Sahin artifacts ever encountered by the LYS are the Shade bracers. In the right hands, these bracers enable the wearer to focus one's Am, or perhaps channel it directly from the Fold. That Am is then accessible to the wearer, enabling a wider range and intensity of Umbric abilities. It is theorized that bracers could be more like multipurpose tools than just strictly weapons; a focused and abundant source of Am could enable a wide range of Umbric abilities that are as yet unknown.

— ◦ UNKNOWN 9 ◦ —

AWAKENING™

— ◦ —

Share your Unknown 9: Awakening creations with us to be featured on our channels.



Tag [@unknown9](#) or send them to: community@reflectorentertainment.com



BANDAI NAMCO